

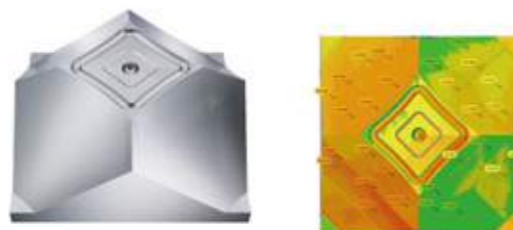
FA SERIES

5-axis Double Column Machining Center



Achieve High Precision, High Speed and Fully Automatic Machining

- 5-axis machining efficiently shortens the paths in machining, considerably reduces the cutting time, and extends the life of cutting tool.
- Rigid structure designed by double column frame meets wide range of machining requirements.
- High dynamic performance on XYZ-axis with high accuracy 2-axis head realizes high excellent performance in multi-angle machining with 5-axis machining center.
- CYTEC 2-axes head equips high torque rotation structure of B/C axis, and D.D. motor on B axis.



5-axis Synchronized Cutting Precision Verified Mold

L280, W 280, H120 mm
The mold accuracy of multi-axis synchronized and fixed axis machining. Tool marks $< 0.04\text{mm}$.

Automatic Kinematic Measurement and Compensation

Achieve Excellent Accuracy Performance of 5-Axis Synchronization Motion. Dynamic Accuracy Reaches 0.04mm(TCPM).

- B axis rotation positioning accuracy $\pm 5''$.
- C axis rotation positioning accuracy $\pm 3''$.
- B/C axis IDD motor design without backlash.
- Embedded spindle vibration sensor : limited to 1 mm/sec.

Model	X axis	Y axis	Z axis	Table dimension	Max. table load	Spindle motor (cont./ 30 min rated)	Spindle speed	Cutting feed rate	Rapid traverse (x/y/z)
Unit	mm	mm	mm	mm	kg	kW	rpm	mm/min	m/min
FA-2123	2,100	2,300	800/1,000 (Opt.)	2,000 x 1,500	8,000	20 / 26	20,000	1-10,000	24 / 20 / 15
FA-2623	2,600			2,500 x 1,500	9,000				
FA-3123	3,100			3,000 x 1,500	10,000				
FA-4123	4,100	2,700	1,000/1,200 (Opt.)	4,000 x 1,500	12,000	57 / 75 (34/43 Opt.)	12,000/ 20,000(Opt.)	1-10,000	18 / 20 / 15
FA-3127	3,100			3,000 x 1,800	10,000				
FA-4127	4,100	4,000 x 1,800	12,000	3,000 x 2,450	13,000	57 / 75 (34/43 Opt.)	12,000/ 20,000(Opt.)	1-10,000	24 / 18 / 15
FA-3233	3,200	4,000 x 2,450	16,000						
FA-4233	4,200	3,300	1,000/1,200 (Opt.)	5,000 x 2,450	20,000	57 / 75 (34/43 Opt.)	12,000/ 20,000(Opt.)	1-10,000	18 / 15 / 15
FA-5233	5,200			6,000 x 2,450	22,000				
FA-6233	6,200			8,000 x 2,450	24,000				
FA-8233	8,200			8,000 x 2,450	24,000				

For details, please refer to Machine Specification Instruction

5-Axis
Machining